

Biodiversity Loss: An Alarming Report – Key figures

April 12 2021



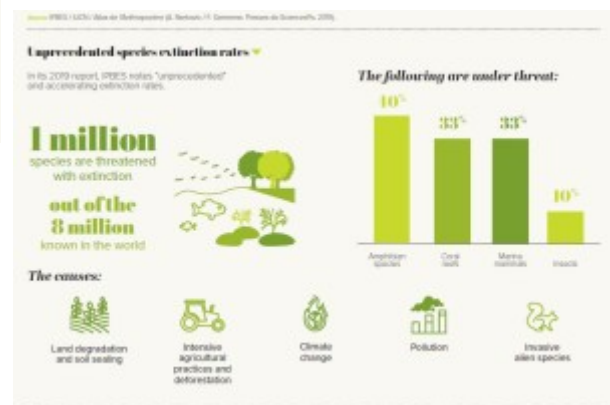
Prepared by 145 experts from 50 countries, the 2019 Global Assessment Report on Biodiversity and Ecosystem Services of the Intergovernmental Science-Policy Platform on Biodiversity and Ecosystem Services (IPBES) confirms nature’s alarming decline. Today, the majority of ice-free land (55%) is heavily used by human activity (housing, cultivated areas, grazing areas). 75% of the land environment and 40% of the marine environment also show “major signs of degradation”, stress the authors of the report.

What is biodiversity?

The Convention on Biological Diversity (CBD) defines biodiversity as:

“The variability among living organisms from all sources including, inter alia, terrestrial, marine and other aquatic ecosystems and the ecological complexes of which they are part; this includes diversity within species, between species and of ecosystems.”

What is biodiversity?



Unprecedented species extinction rates

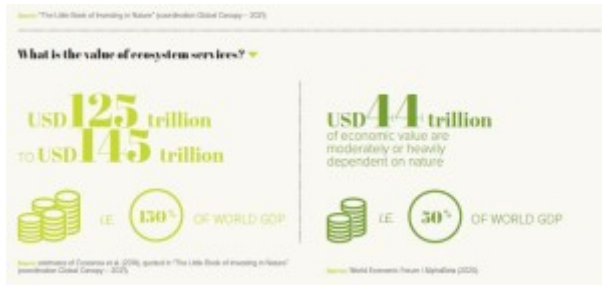


Carbon dioxide reserves also

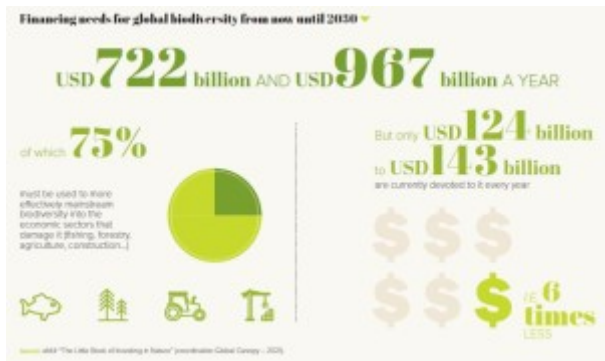
threatened



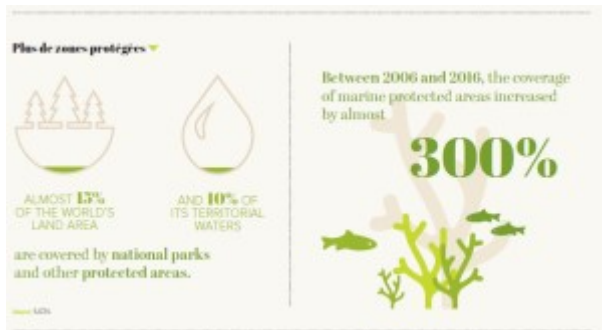
Loss of biodiversity



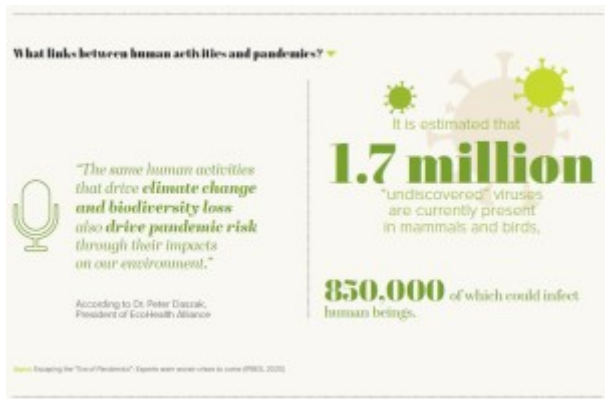
What is the value of ecosystem services?



Financing needs for global biodiversity from now until 2030



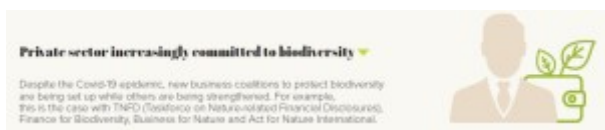
More protected areas



What links between human activities and pandemics?



Development banks and their clients produce a large volume of



Private sector increasingly committed to biodiversity

biodiversity data

© 2021 - Private Sector & Development